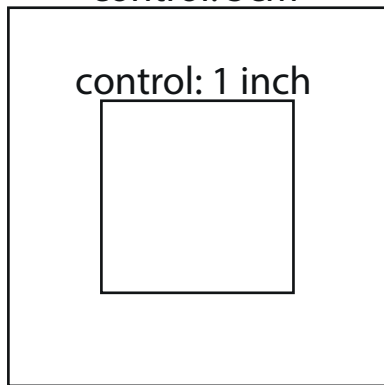


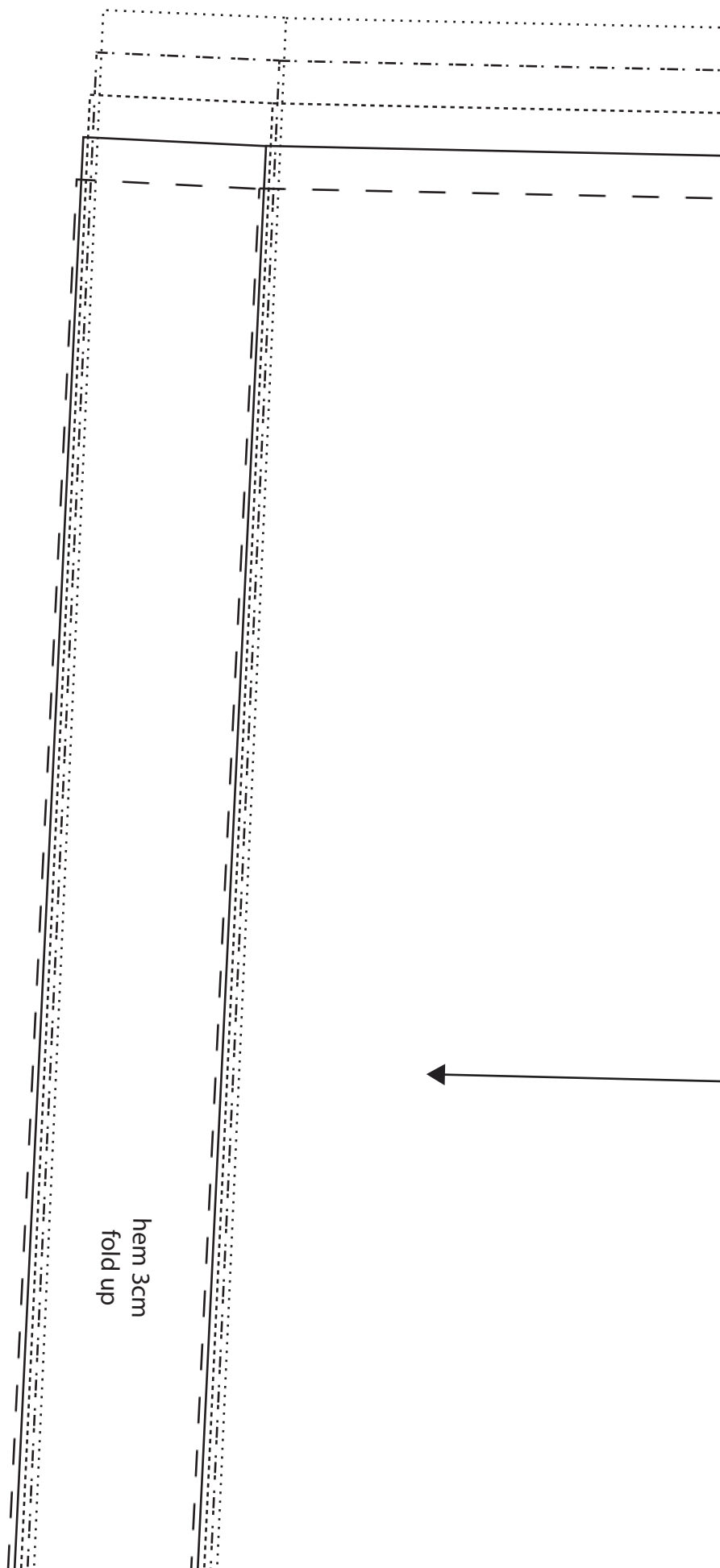
control: 5cm



This pattern has NO seam allowance included. Please add you preferred seam allowance while cutting out your fabric.

Just one line: Pattern piece is for all sizes

- - - - size 34/XS
- size 36/S
- ..... size 38/M
- . - . size 40/L
- ..... size 42/XL

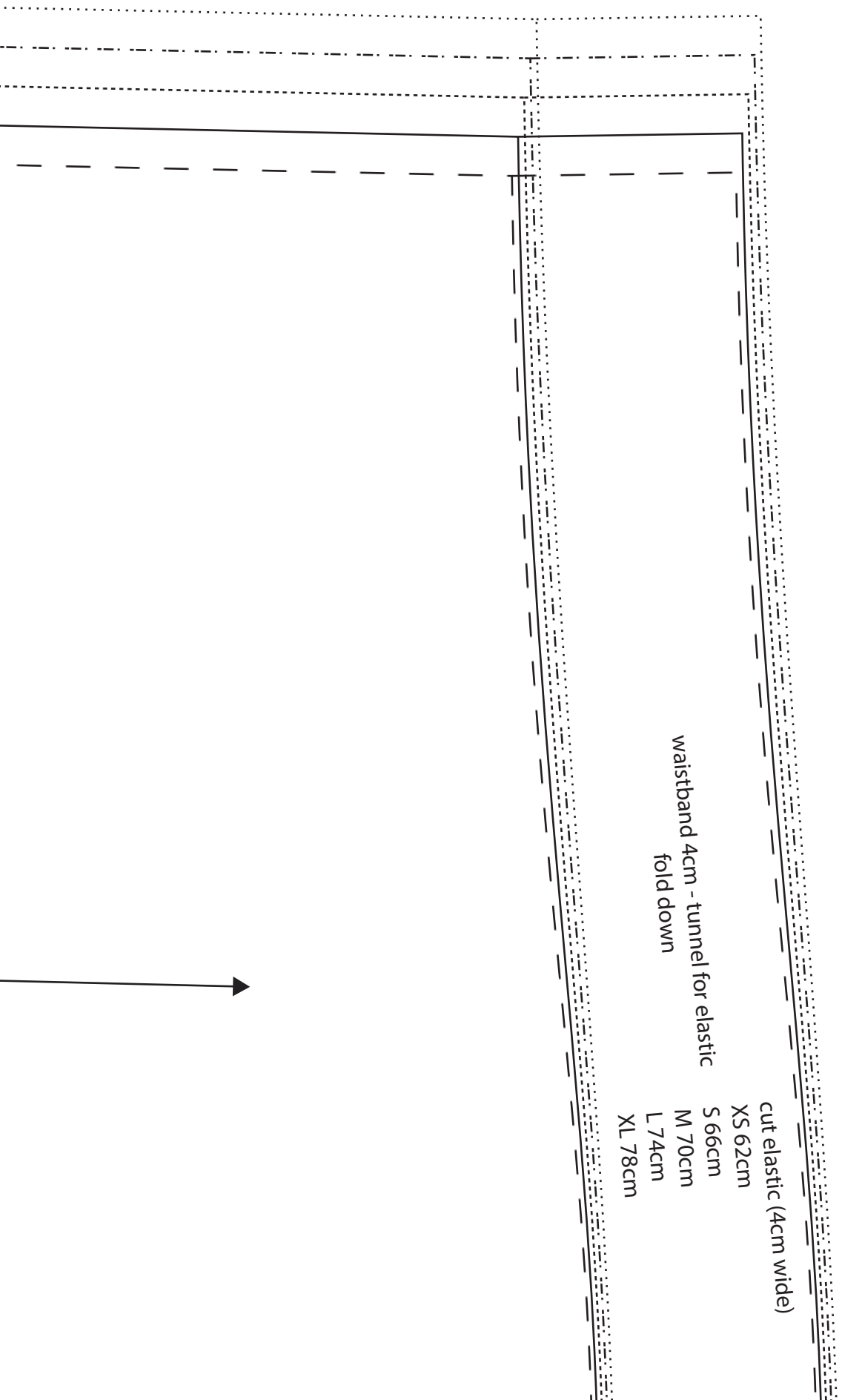




**SHORTS  
WITH ELASTIC WAIST**

---

back cut 2x



waistband 4cm - tunnel for elastic  
fold down

cut elastic (4cm wide)  
XS 62cm  
S 66cm  
M 70cm  
L 74cm  
XL 78cm





The image shows a technical drawing of a garment pattern, likely a pair of pants or shorts, with various lines indicating different parts and sizes. The drawing includes a waistband area with a cut elastic and a main body area. The lines are solid, dashed, and dotted, representing different construction details. The size specifications are listed vertically on the right side of the drawing.

cut elastic (4cm wide)

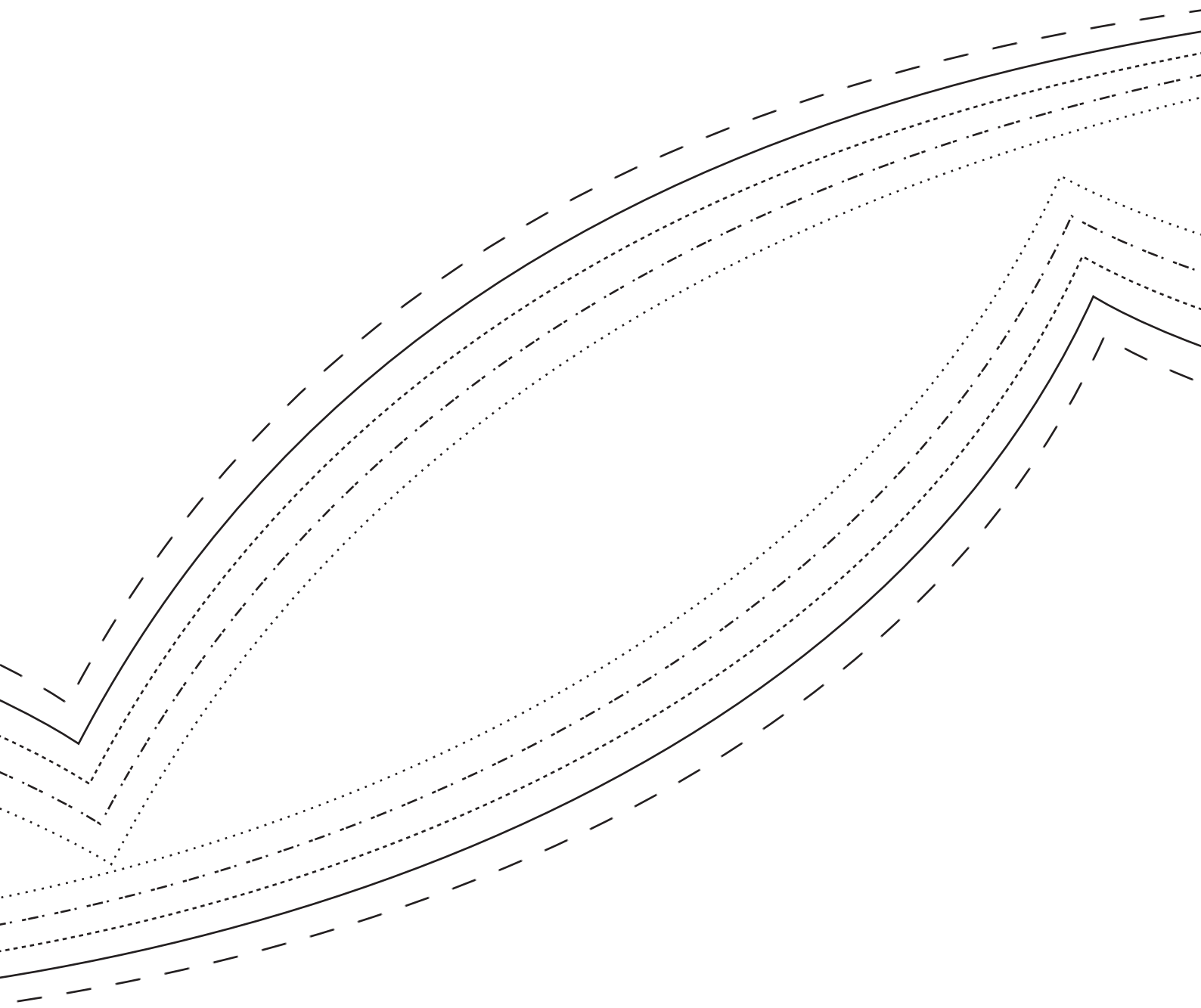
XS 62cm

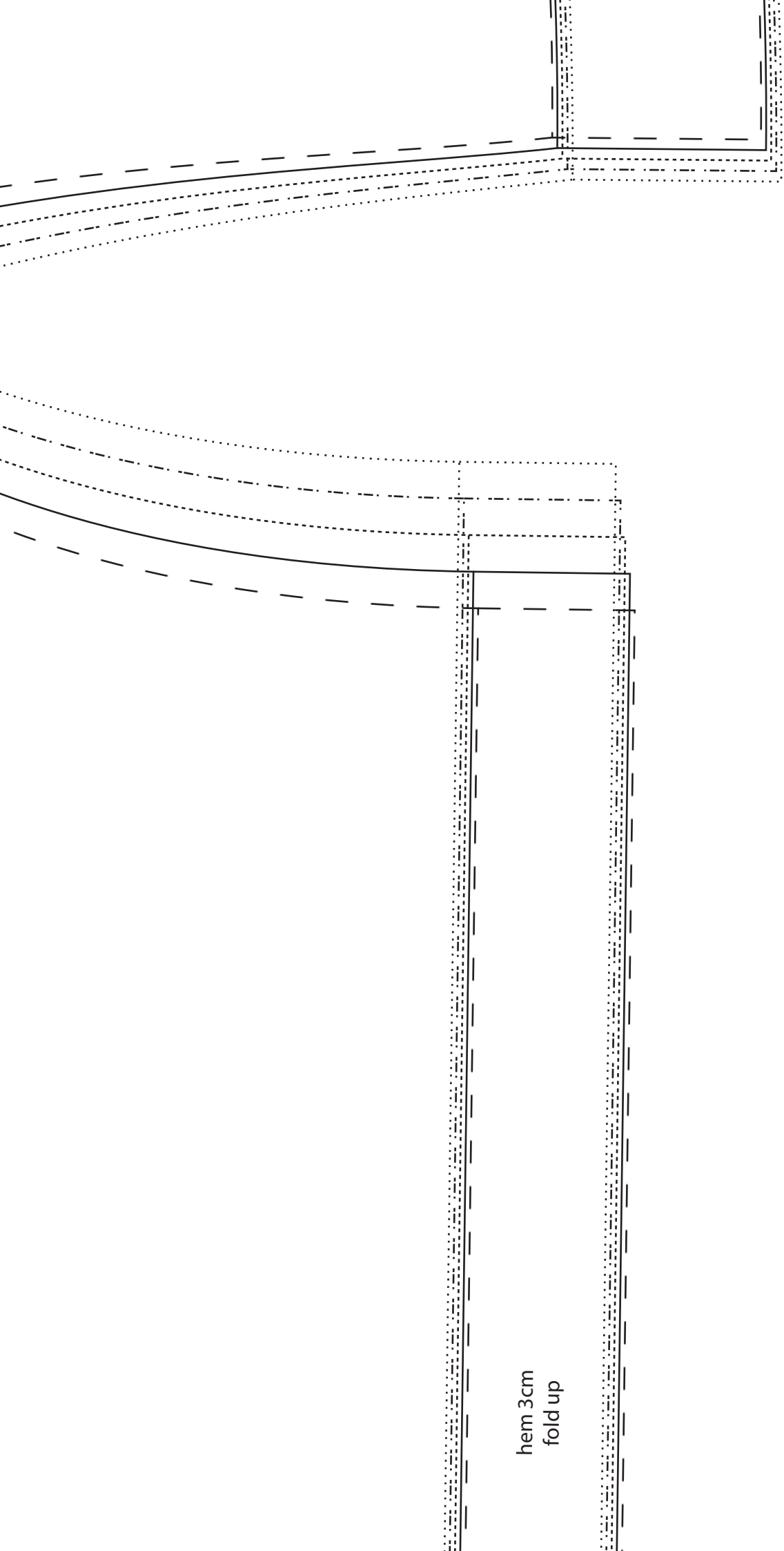
S 66cm

M 70cm

L 74cm

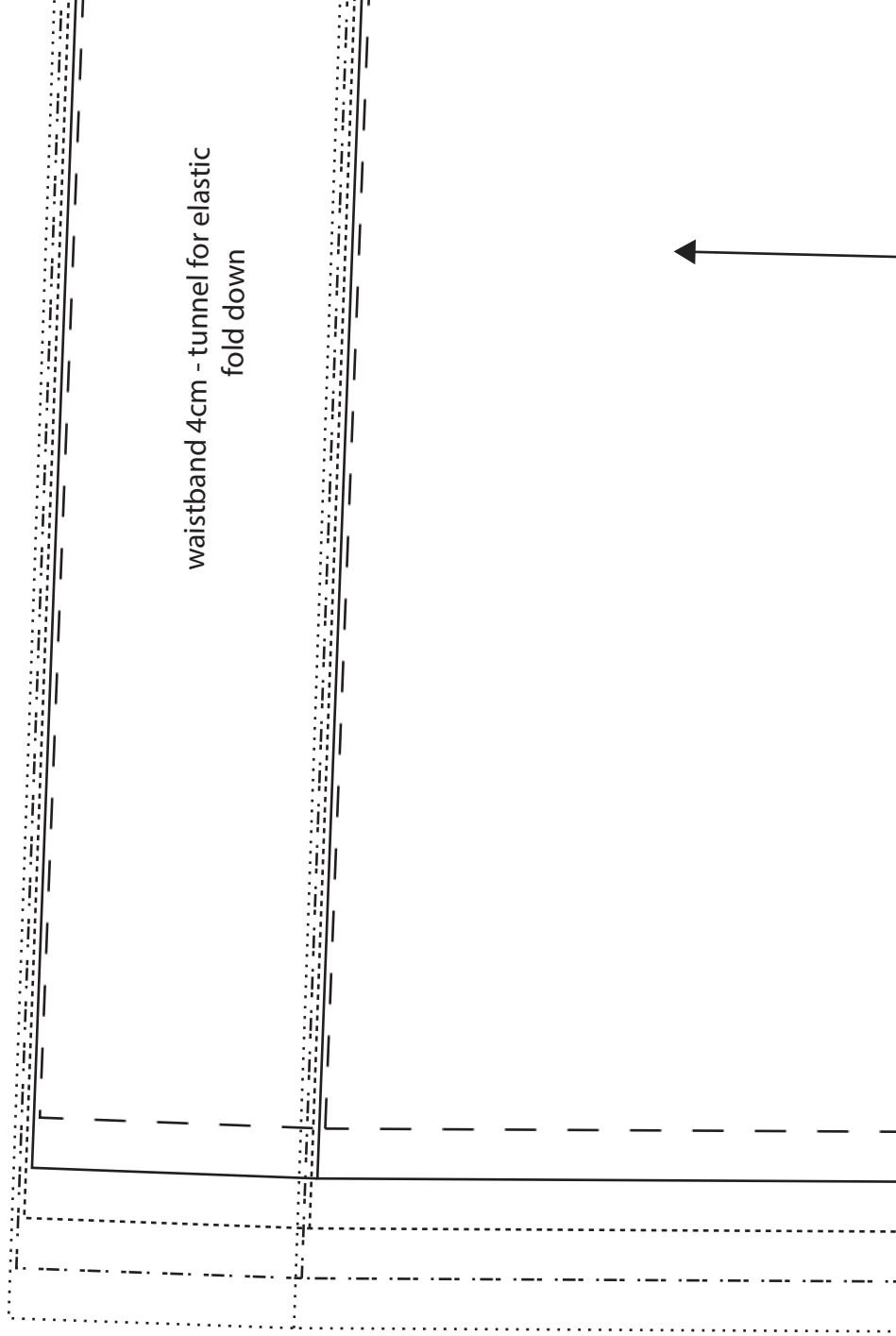
XL 78cm





hem 3cm  
fold up

waistband 4cm - tunnel for elastic  
fold down



front cut 2x

**SHORTS  
WITH ELASTIC WAIST**

